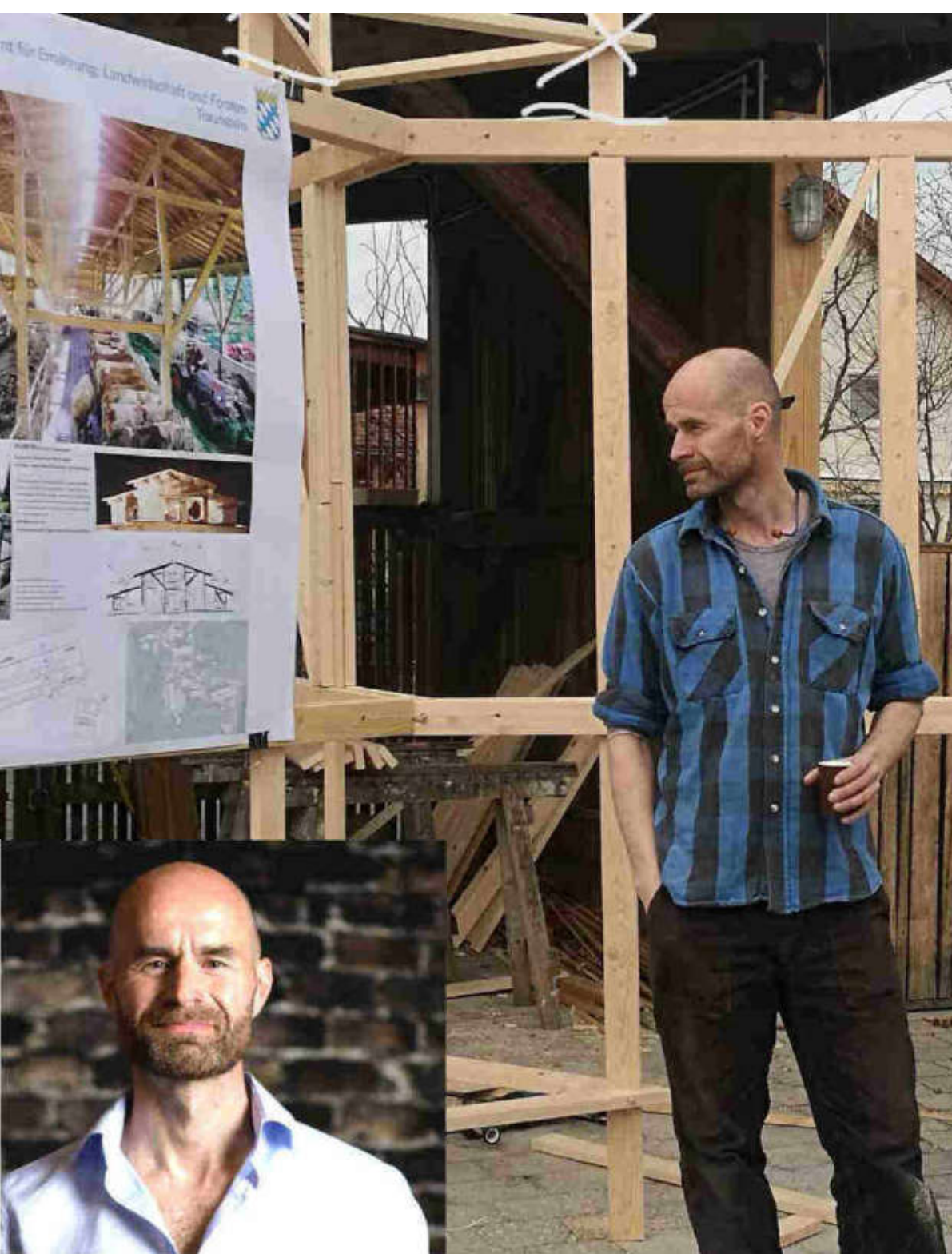
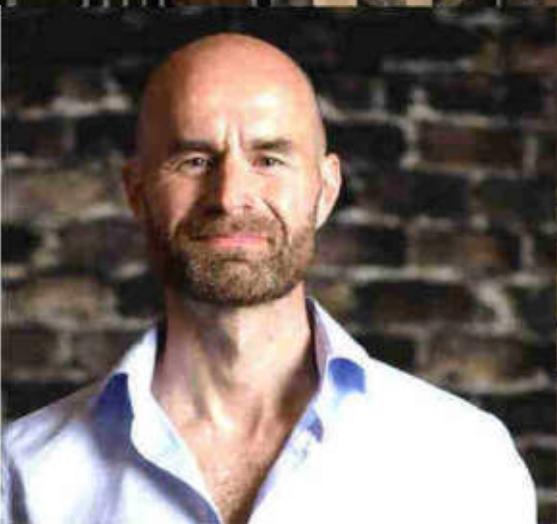


REGIONALES BAUEN IN DER LANDWIRTSCHAFT STALLBESUCHE

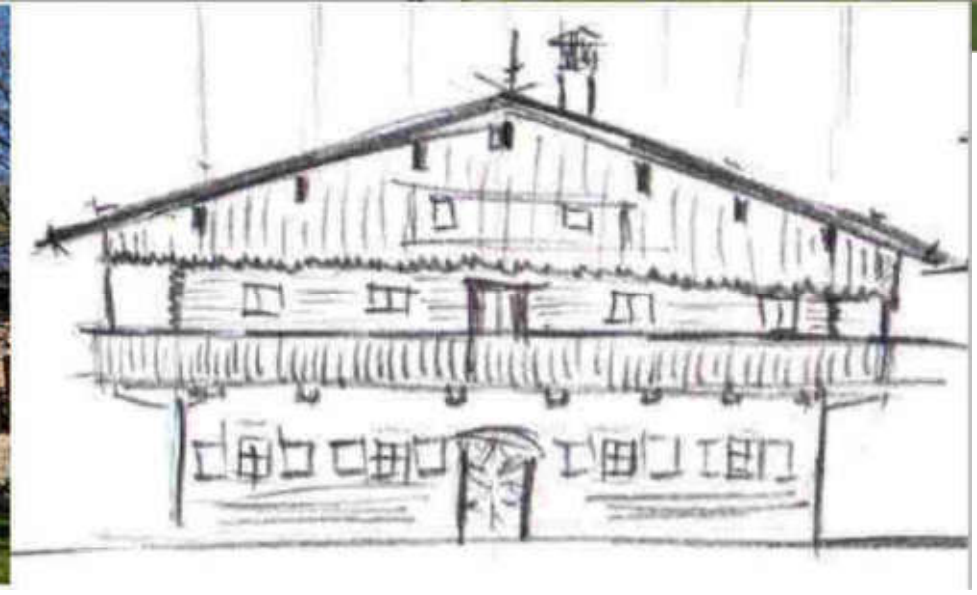




Bauberater
Architekt
Zimmerer
stefan bauer
AELF Holzkirchen



Regionaler Stallbau...?



Regionaler Stallbau „auf offenem Feld“



Regionaler Stallbau „auf offenem Feld“



Regionaler Stallbau „auf offenem Feld“



Regionaler Stallbau „auf offenem Feld“



Regionaler Stallbau „Hof- Dorfgefüge“



Regionaler Stallbau „Hof- Dorfgefüge“



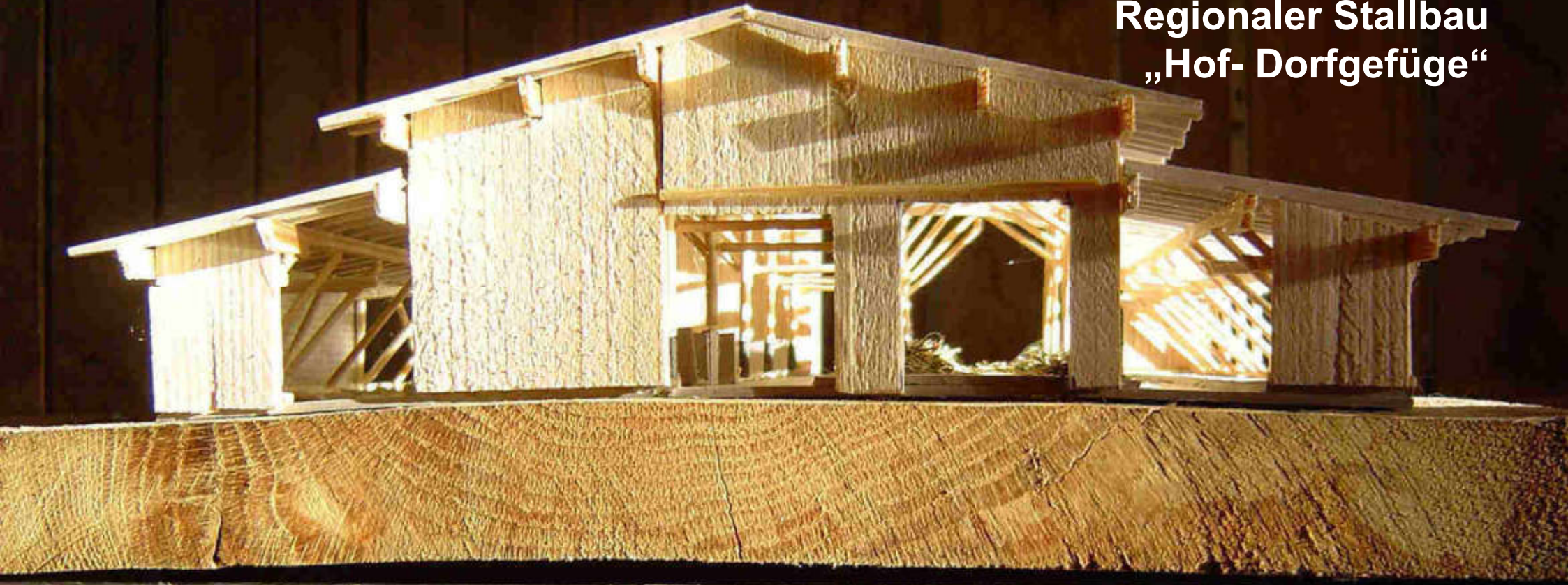
Regionaler Stallbau „Hof- Dorfgefüge“



Regionaler Stallbau „Hof- Dorfgefüge“



**Regionaler Stallbau
„Hof- Dorfgefüge“**



Regionaler Stallbau „Hof- Dorfgefüge“



Regionaler Stallbau „Hof- Dorfgefüge“



Regionaler Stallbau „Hof- Dorfgefüge“



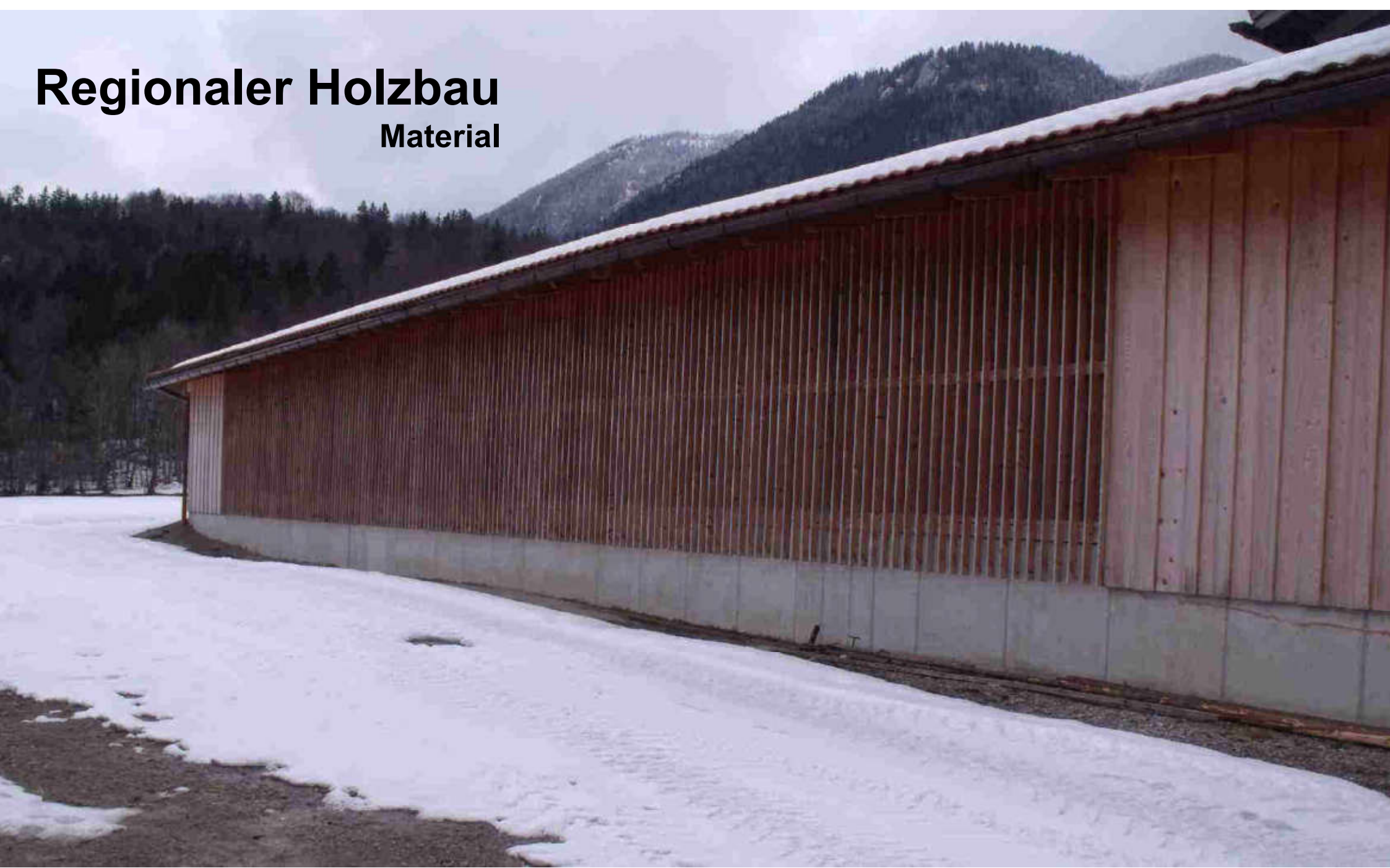


Regionaler Holzbau Material



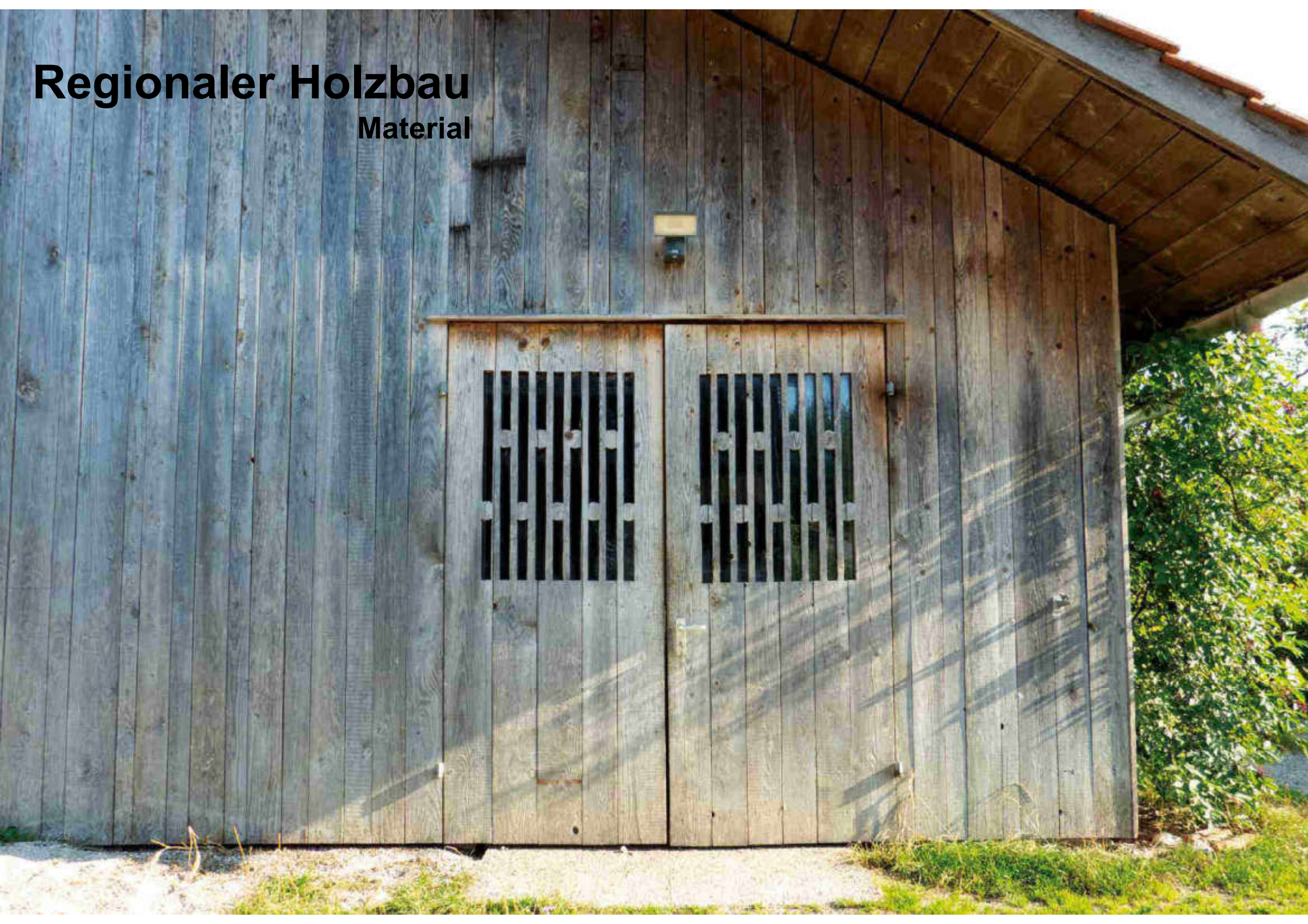
Regionaler Holzbau

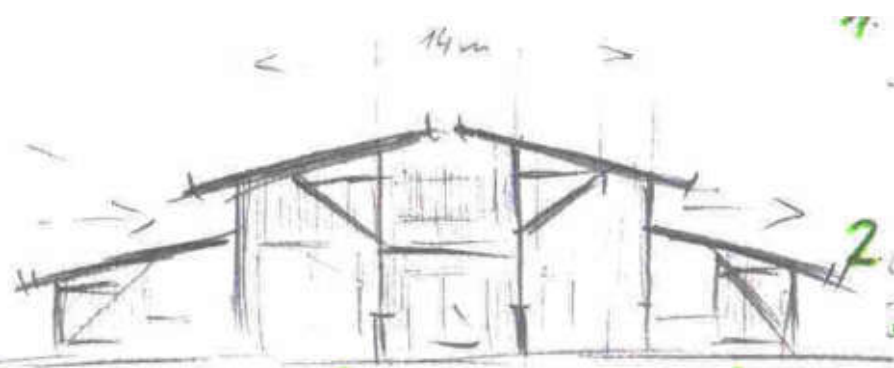
Material



Regionaler Holzbau

Material





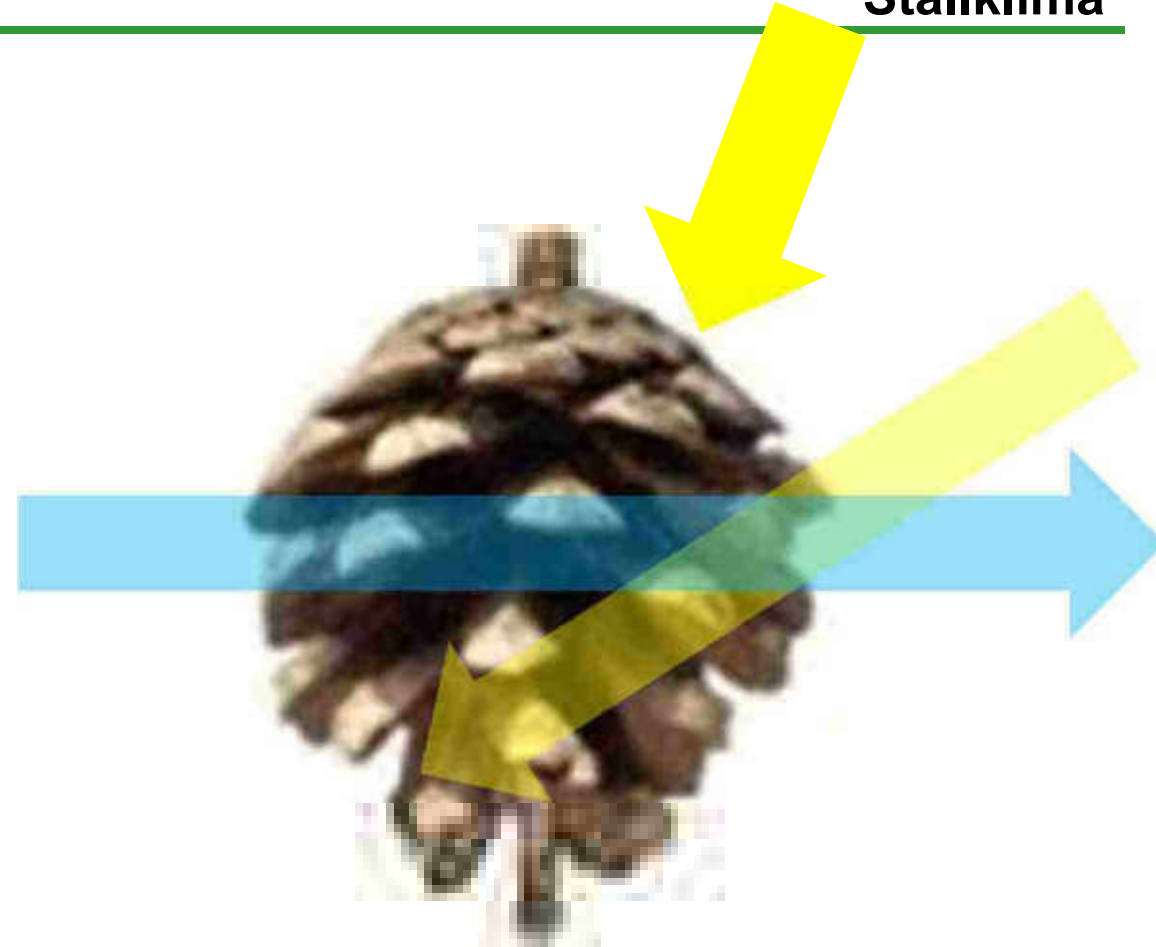
„Clevere Lösungen kommen mit wenig oder gar keiner Elektronik aus. Nur dumme Gebäude brauchen künstliche Intelligenz“.

Prof. Streicher Uni Innsbruck, Energieeffizientes Bauen

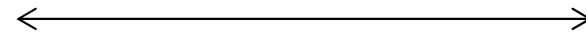


Regionaler Holzbau

Stallklima



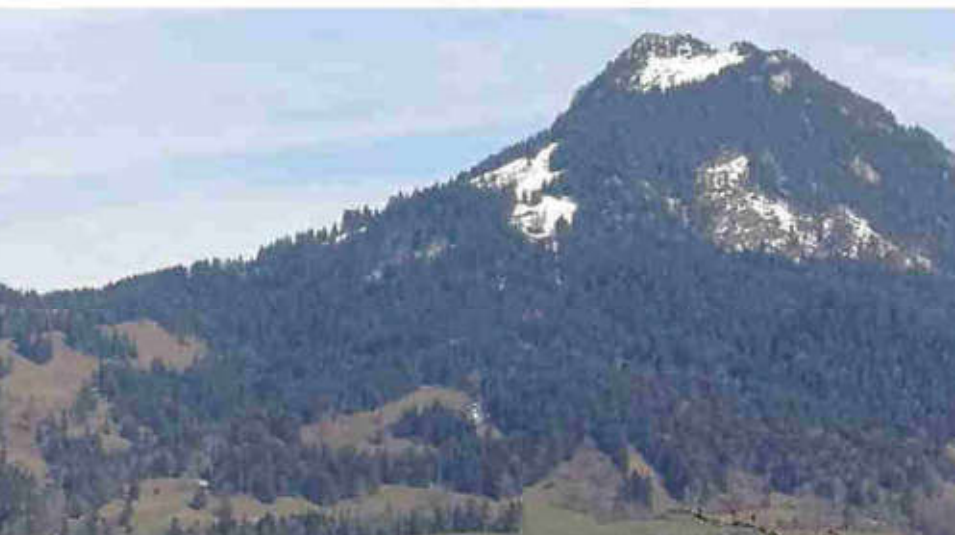
Max 20 Meter





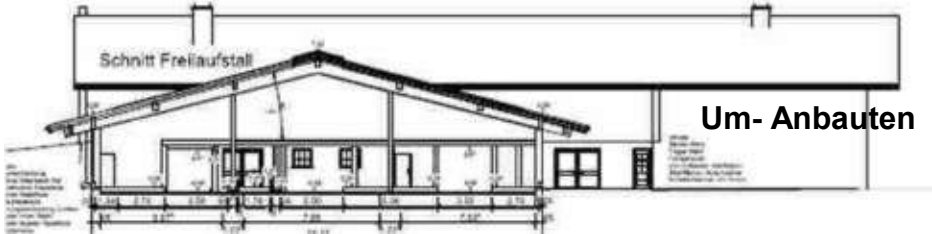
Regionaler Holzbau

Beispiele



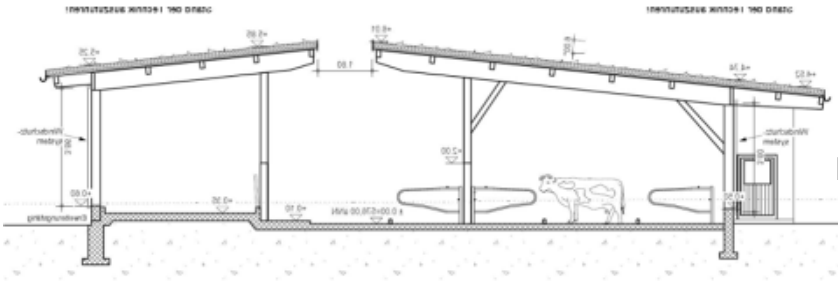
Regionaler Holzbau

Baukosten



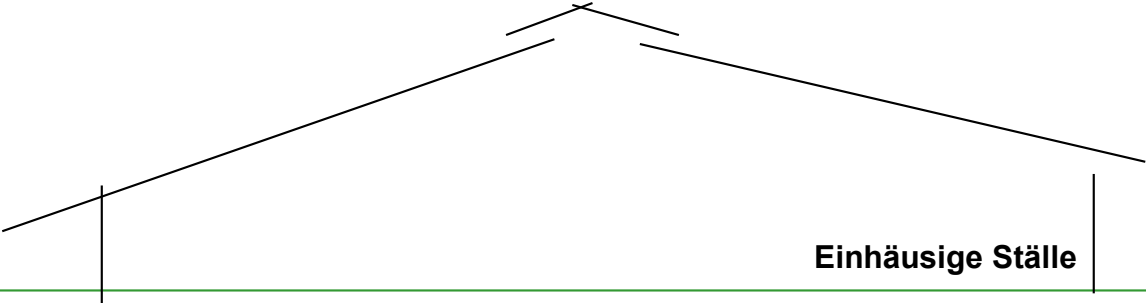
65%-150%

Baukosten Unter- und Hochbau
ohne Technik/ Ausbau/ Lagerstätten/
Außenanlagen/ NK



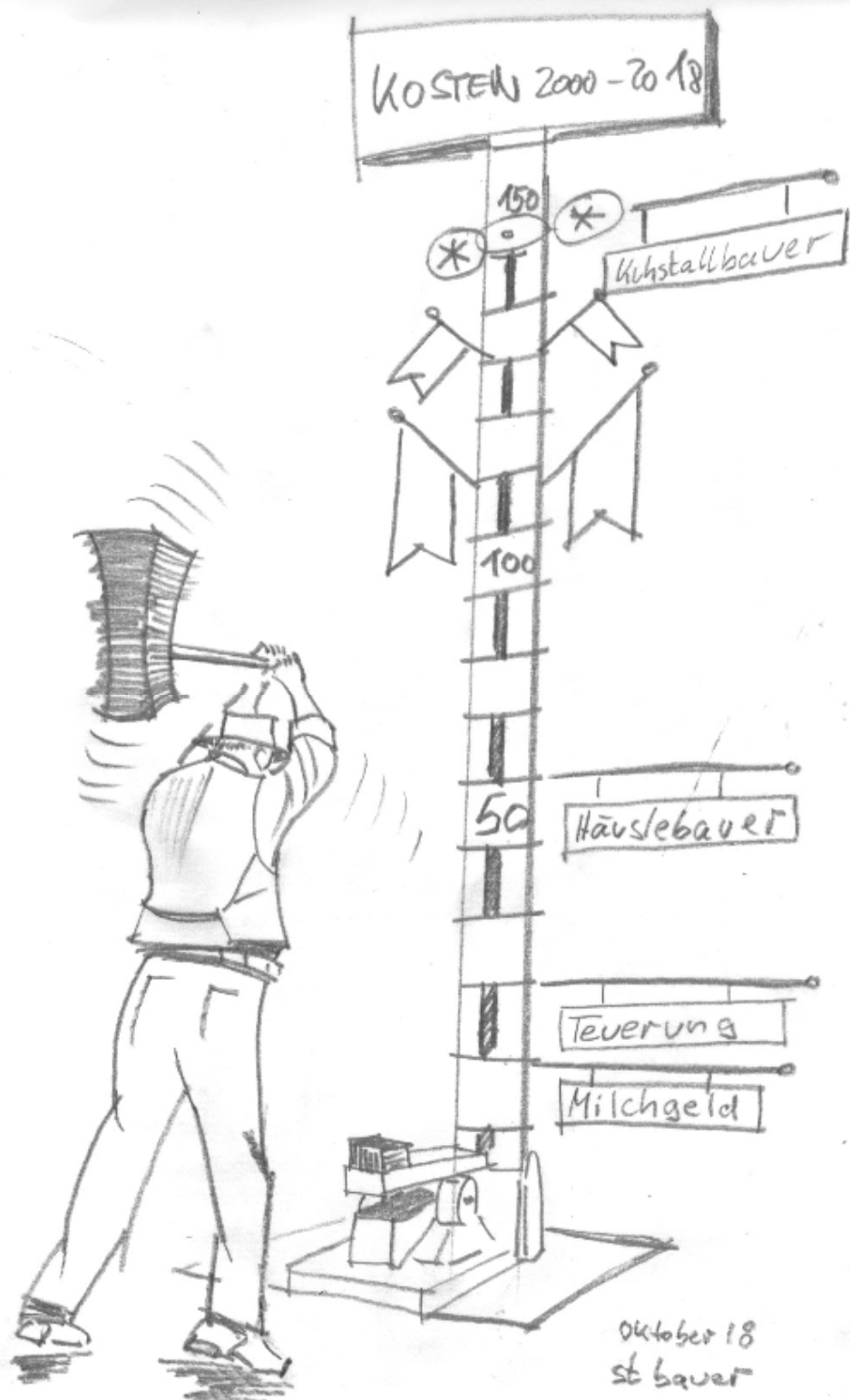
Modulställe LfL

85%



Einhäusige Ställe

100%



Regionaler Holzbau

Baukosten

- Bestandgebäude nutzen
- m²/ Kuh reduzieren
- einfacher Grundriss/ Hülle
- sparsamer Umgang mit Bauland
- mit dem Gelände bauen!
- Konzept und Planung bezahlen
- Weglassen von Unnötigem

*Wandler
Hof*



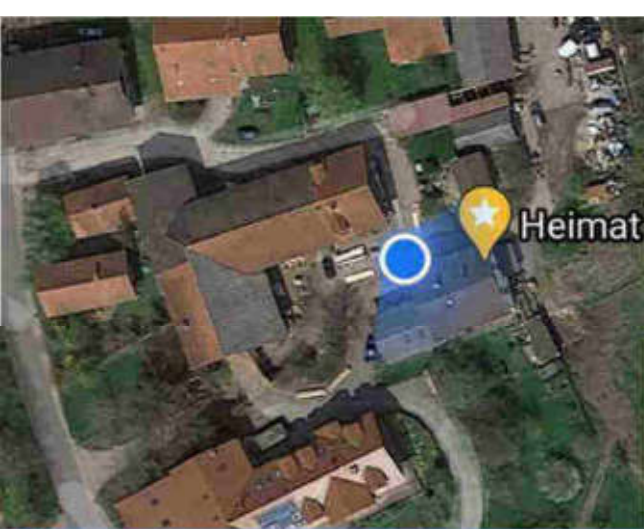
Regionaler Holzbau

Wandlerhof

Stadlers in Antersberg/ Tuntenhausen/

Rosenheim





Regionaler Holzbau

Wandlerhof Stadlers in Antersberg







Regionaler Holzbau

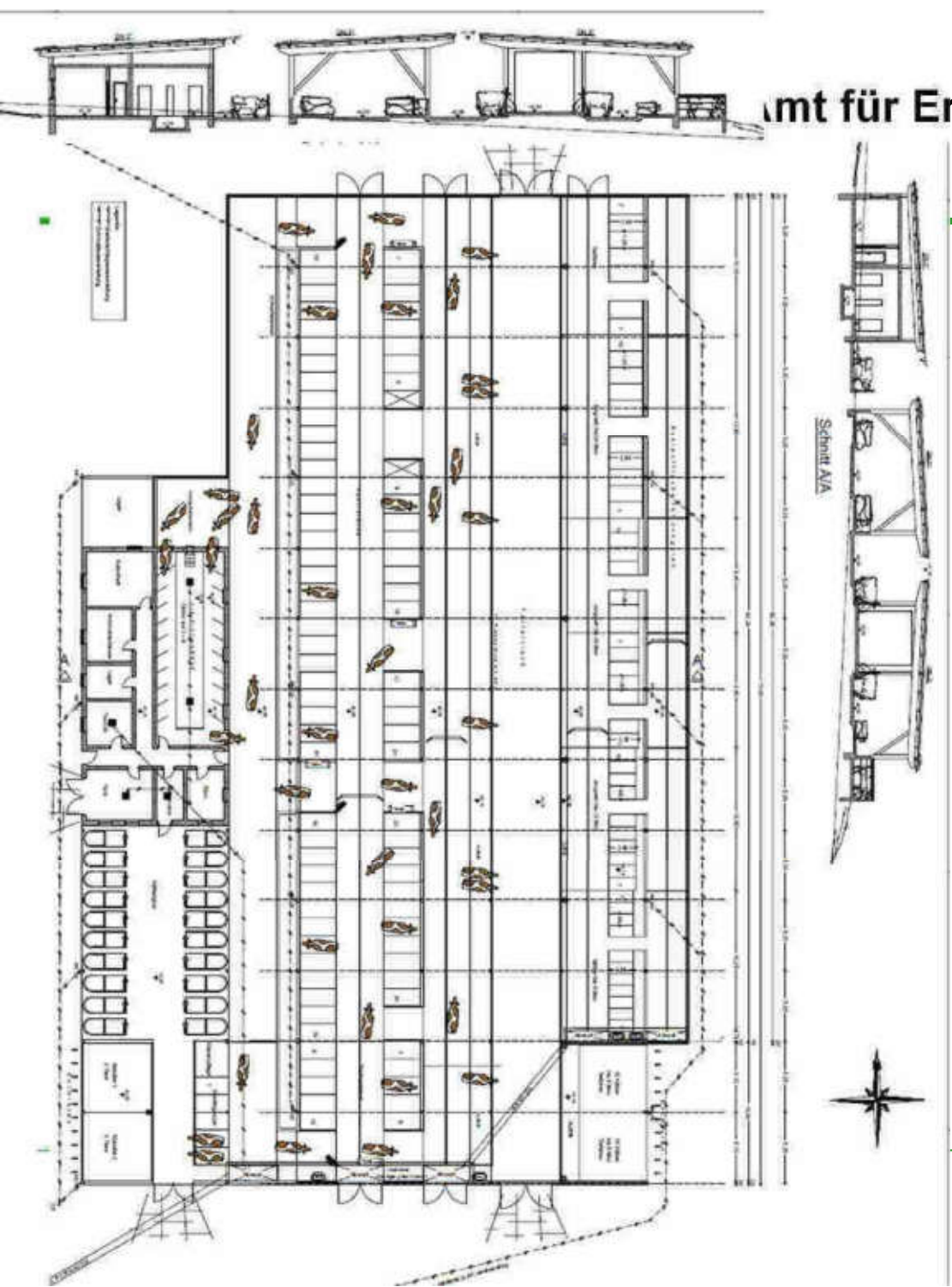
Wandlerhof
Stadlers in Antersberg







amt für Ernäh





Stallrundgang



für Ernähr

Heutrocknung







rnäl







ng, Landwirtschaft und Forsten
Traunstein

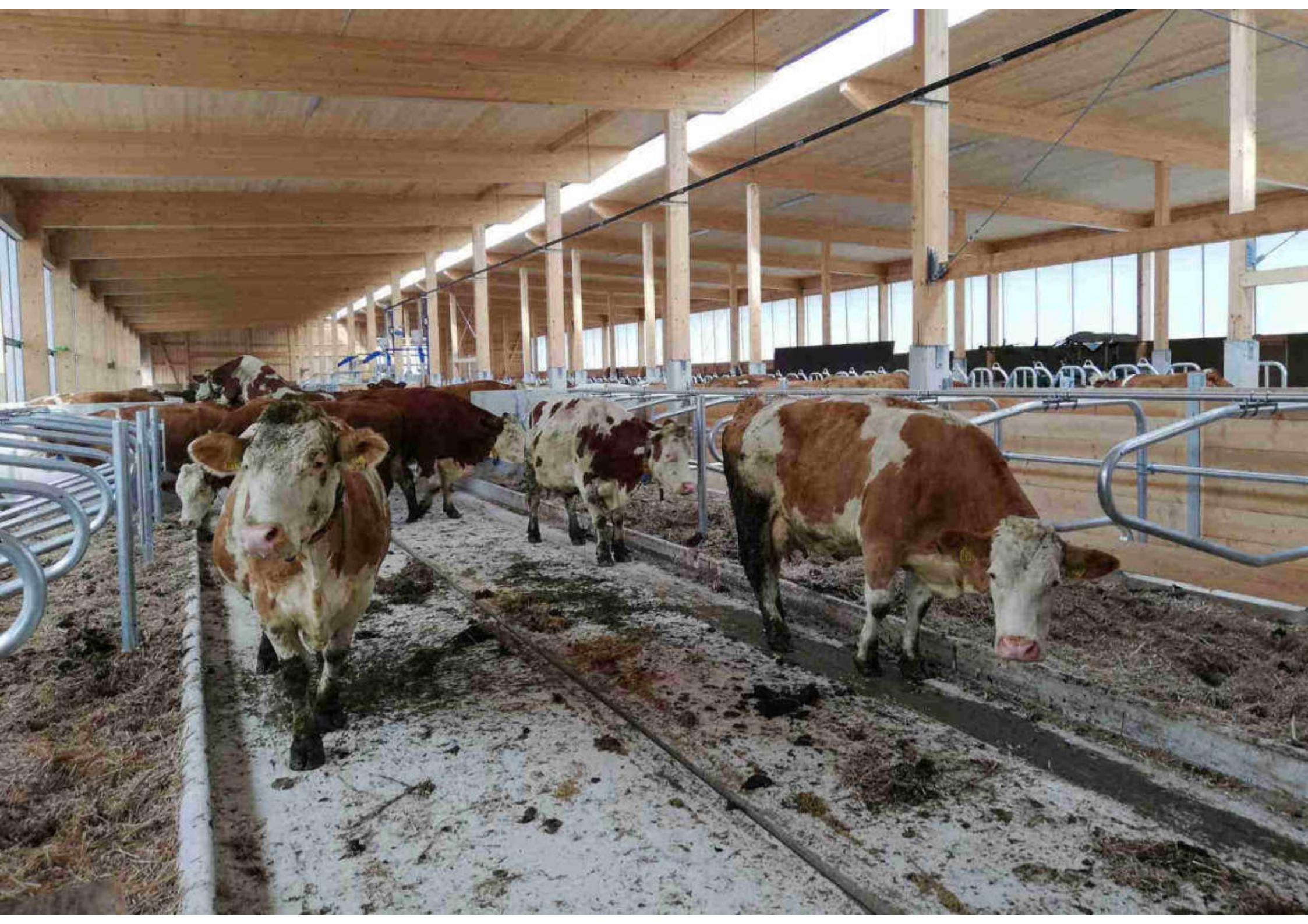


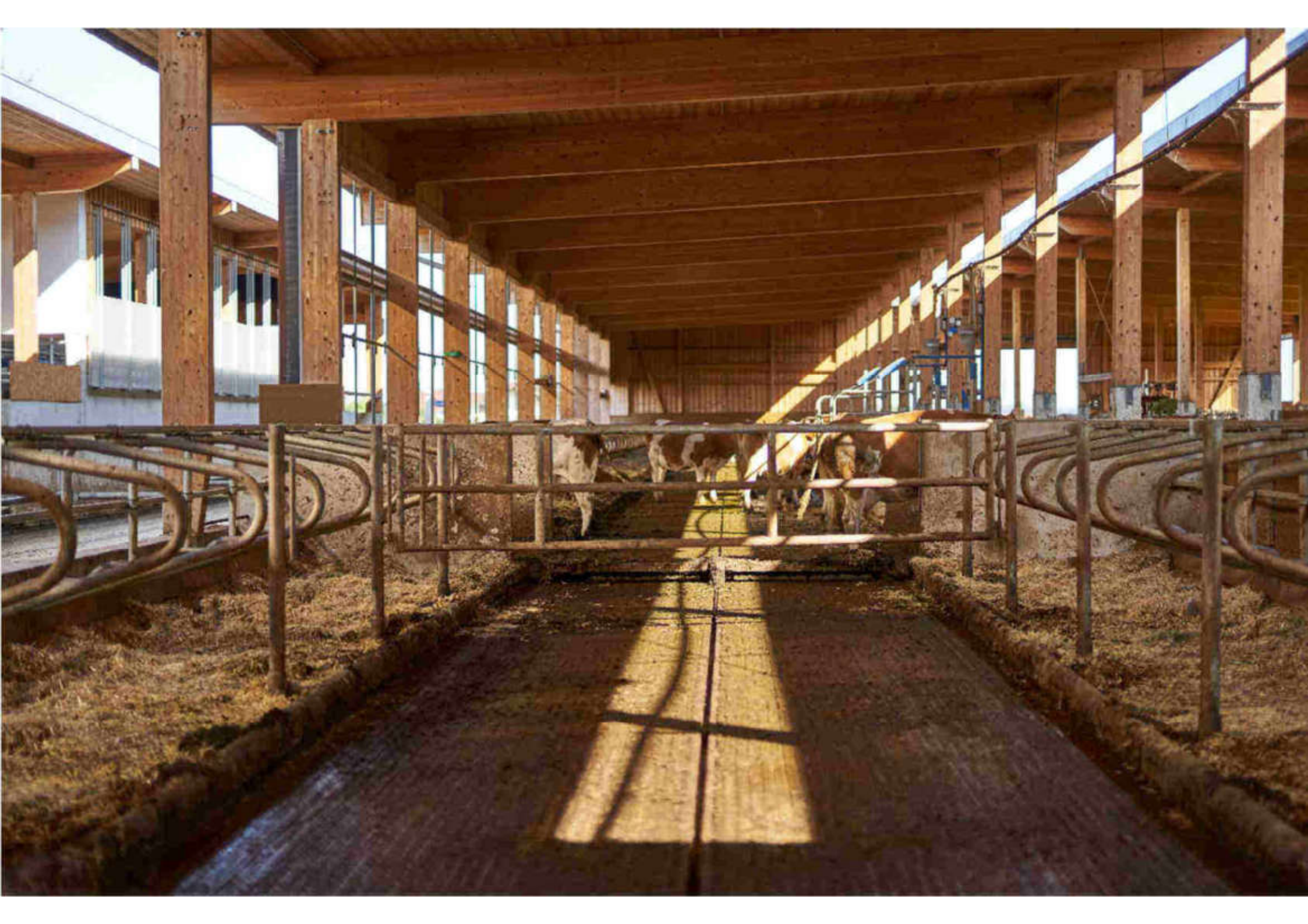


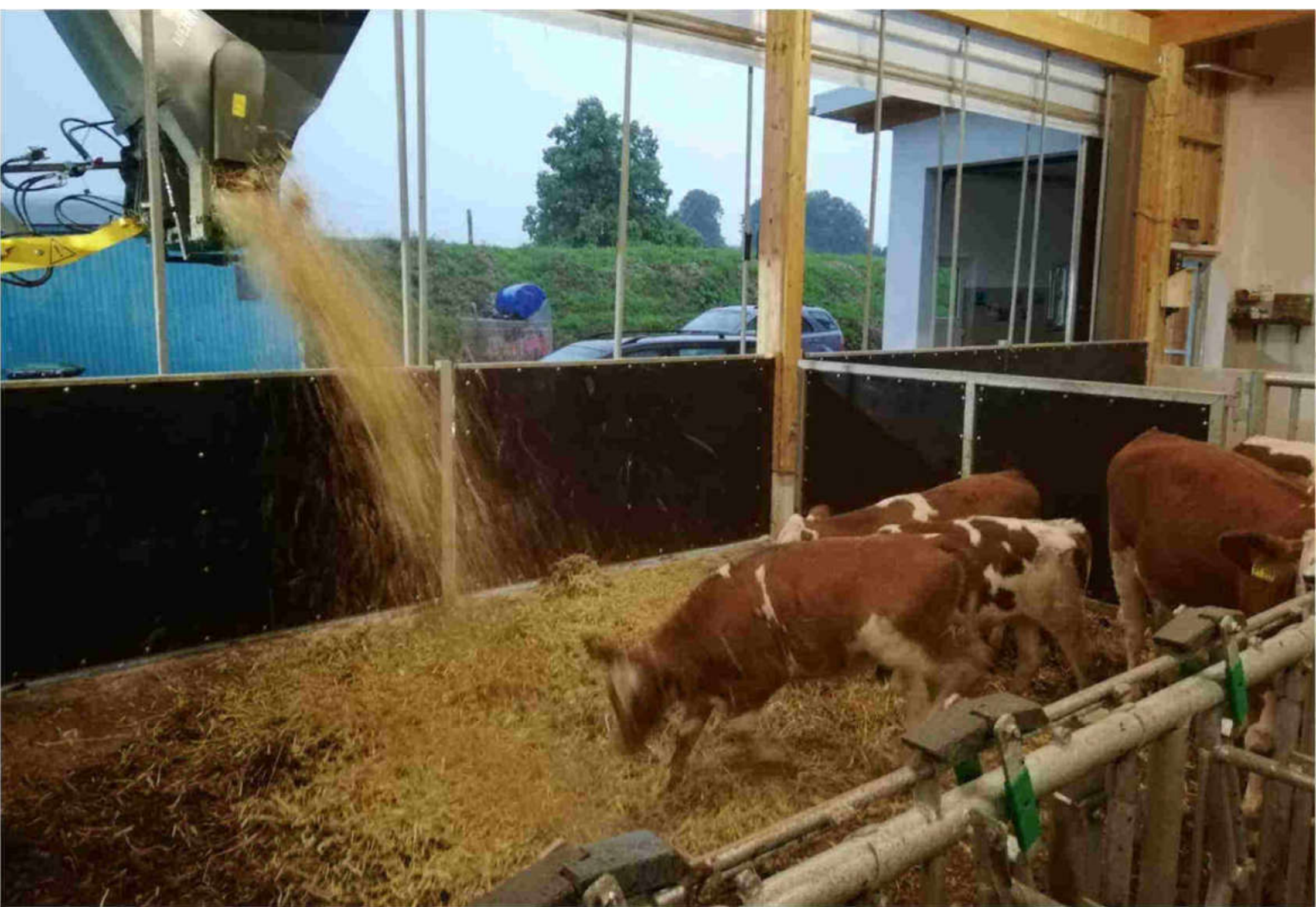


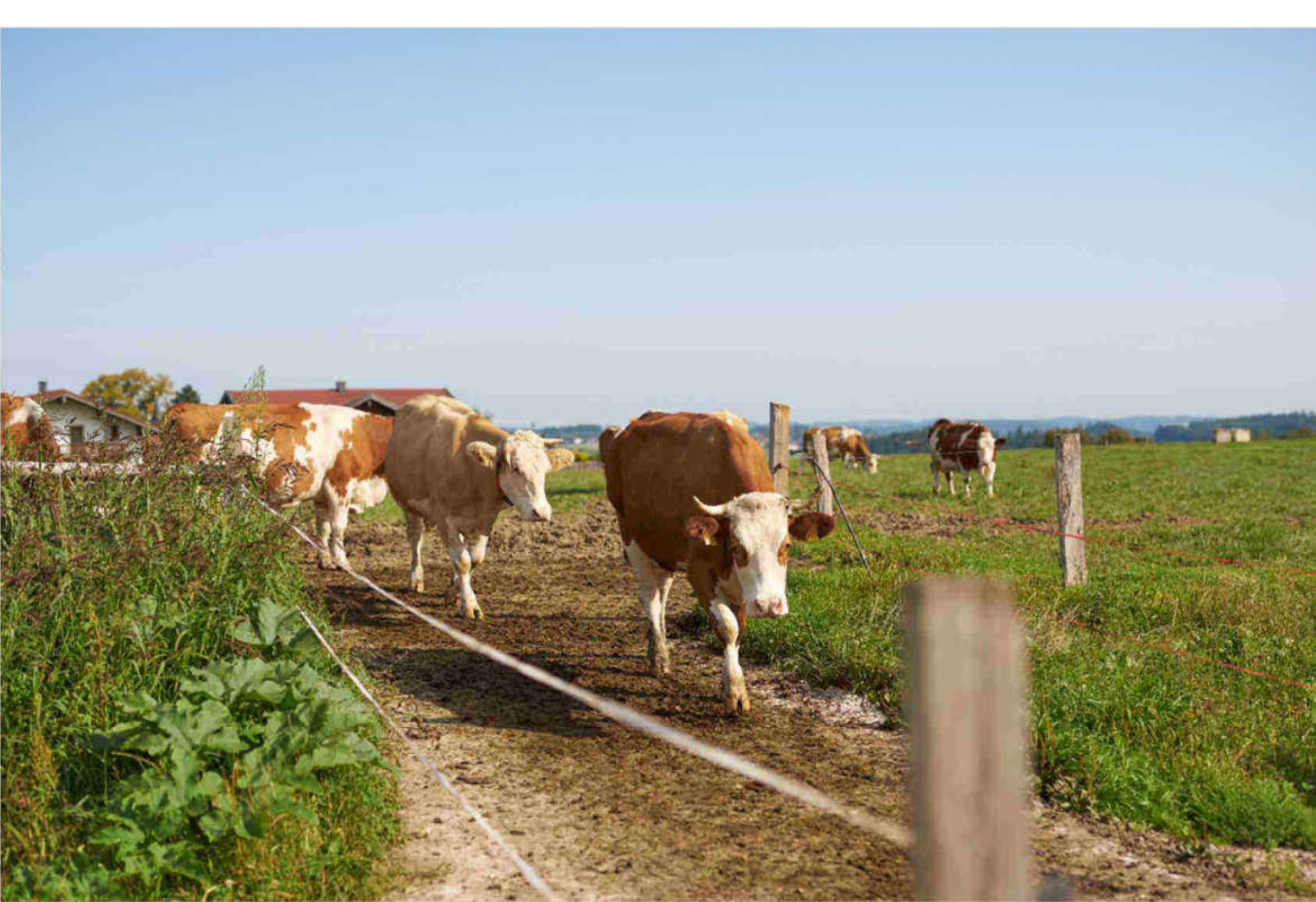


















ts





Baustelle







Amt für Ernährung, L

































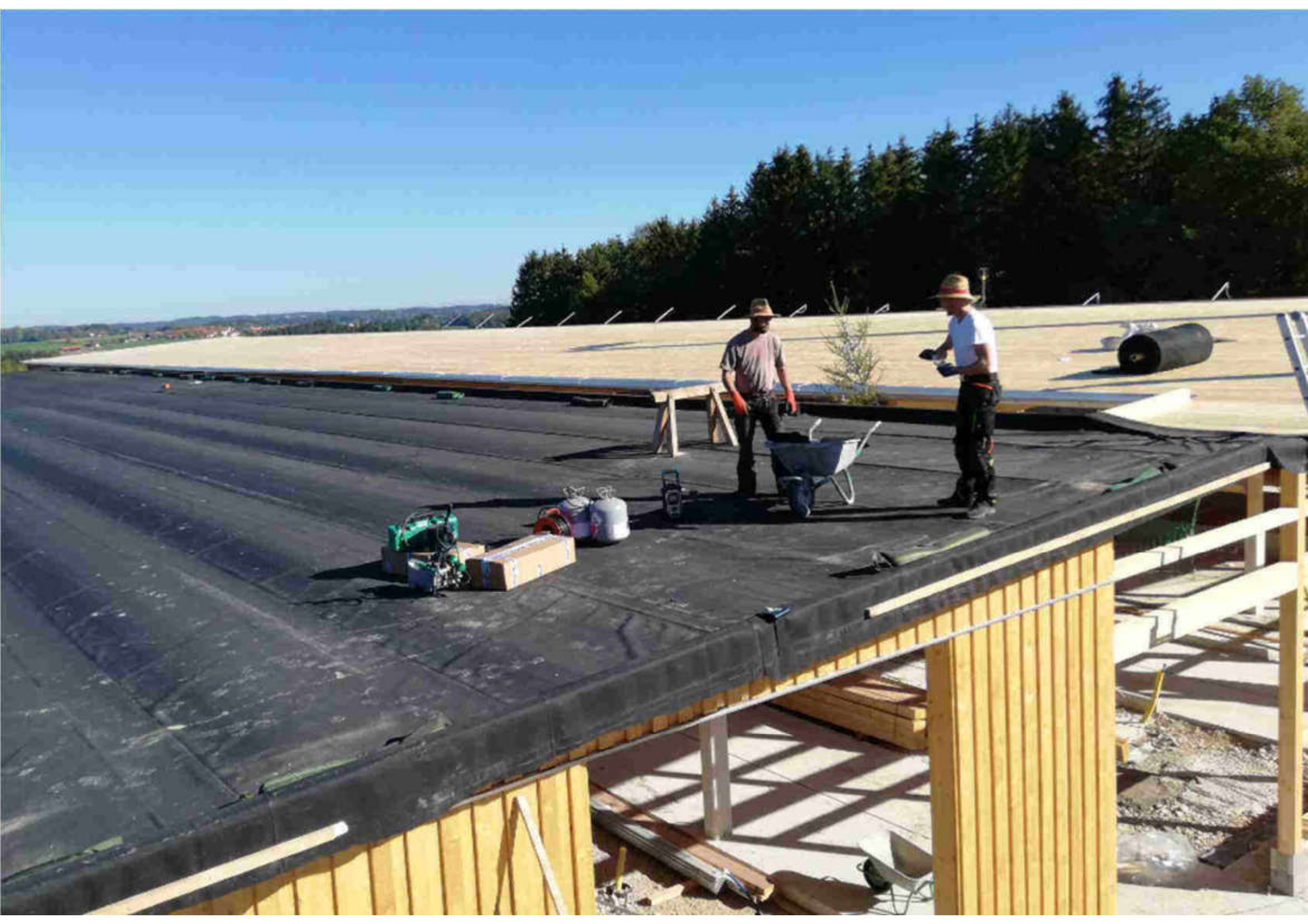














ä



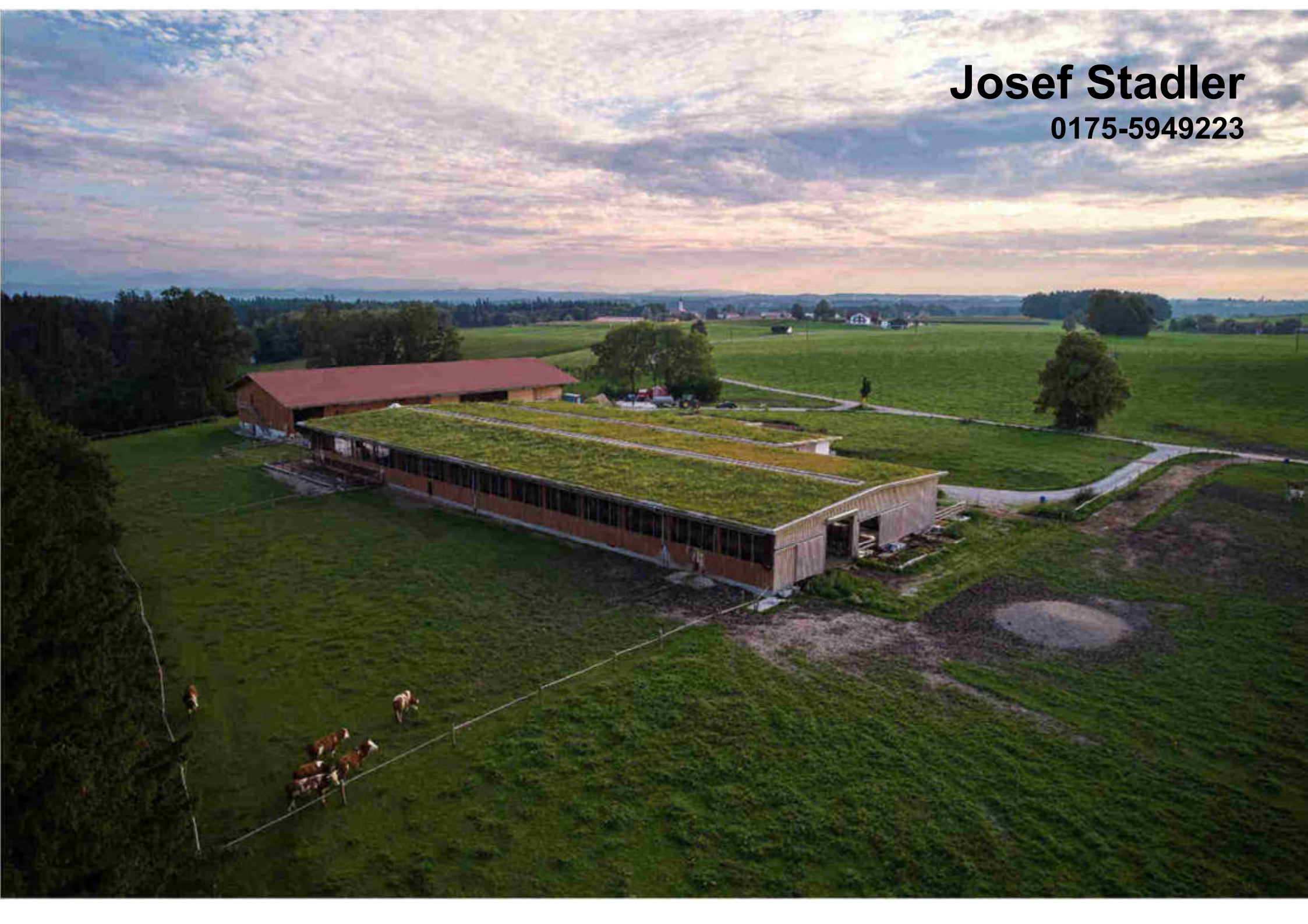






Josef Stadler

0175-5949223



Regionaler Holzbau

Heisenhof

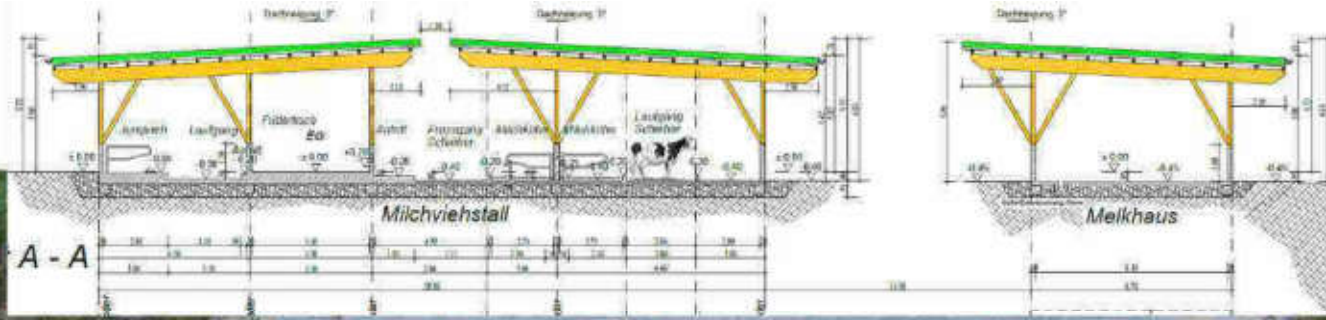
Pichls in Umrathshausen/

Frasdorf/Rosenheim

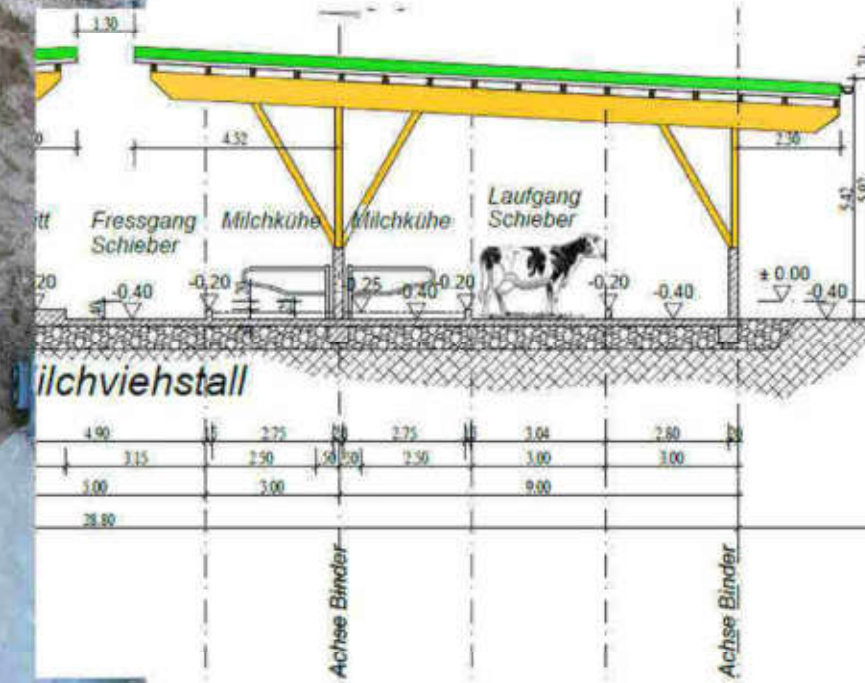




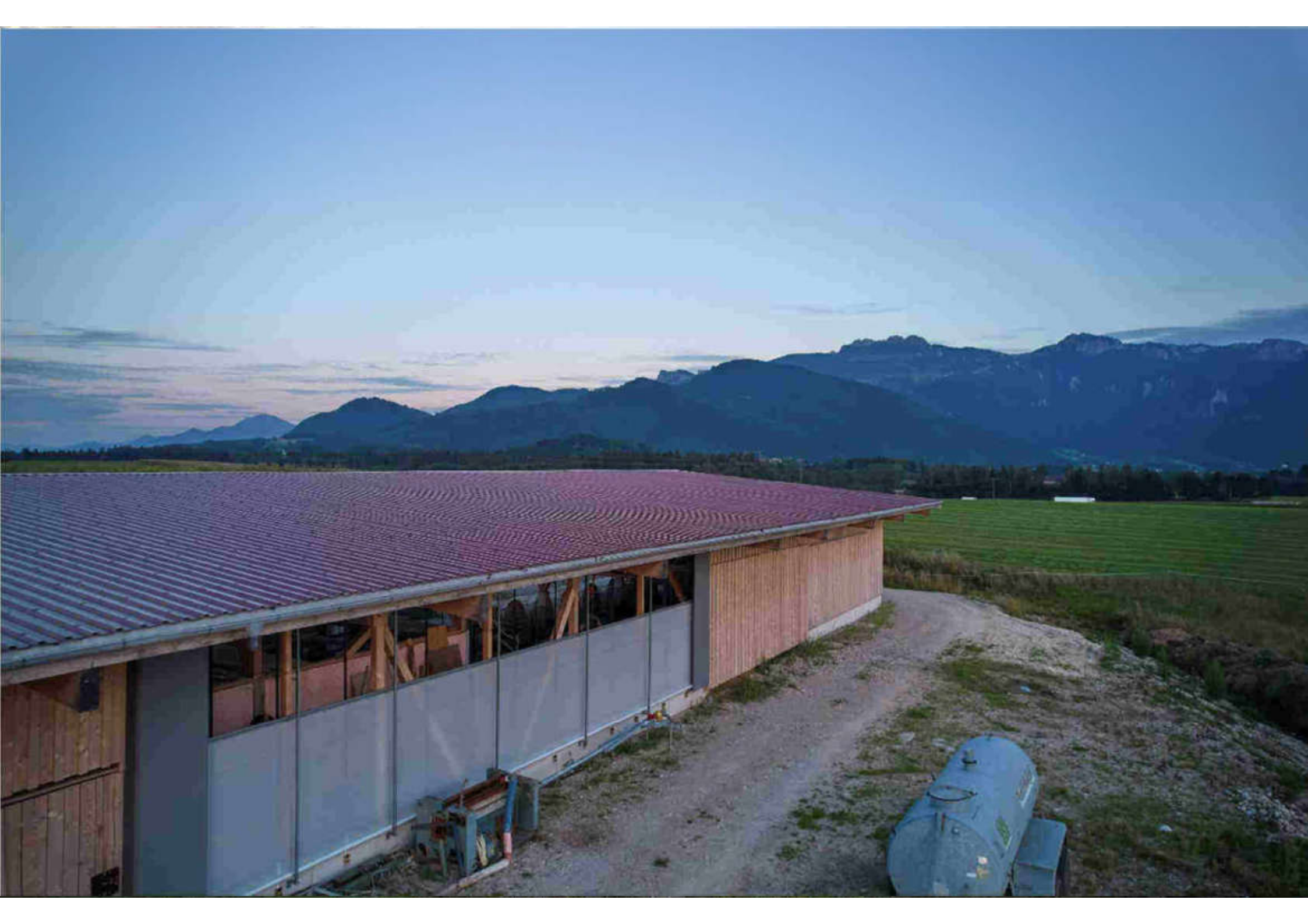


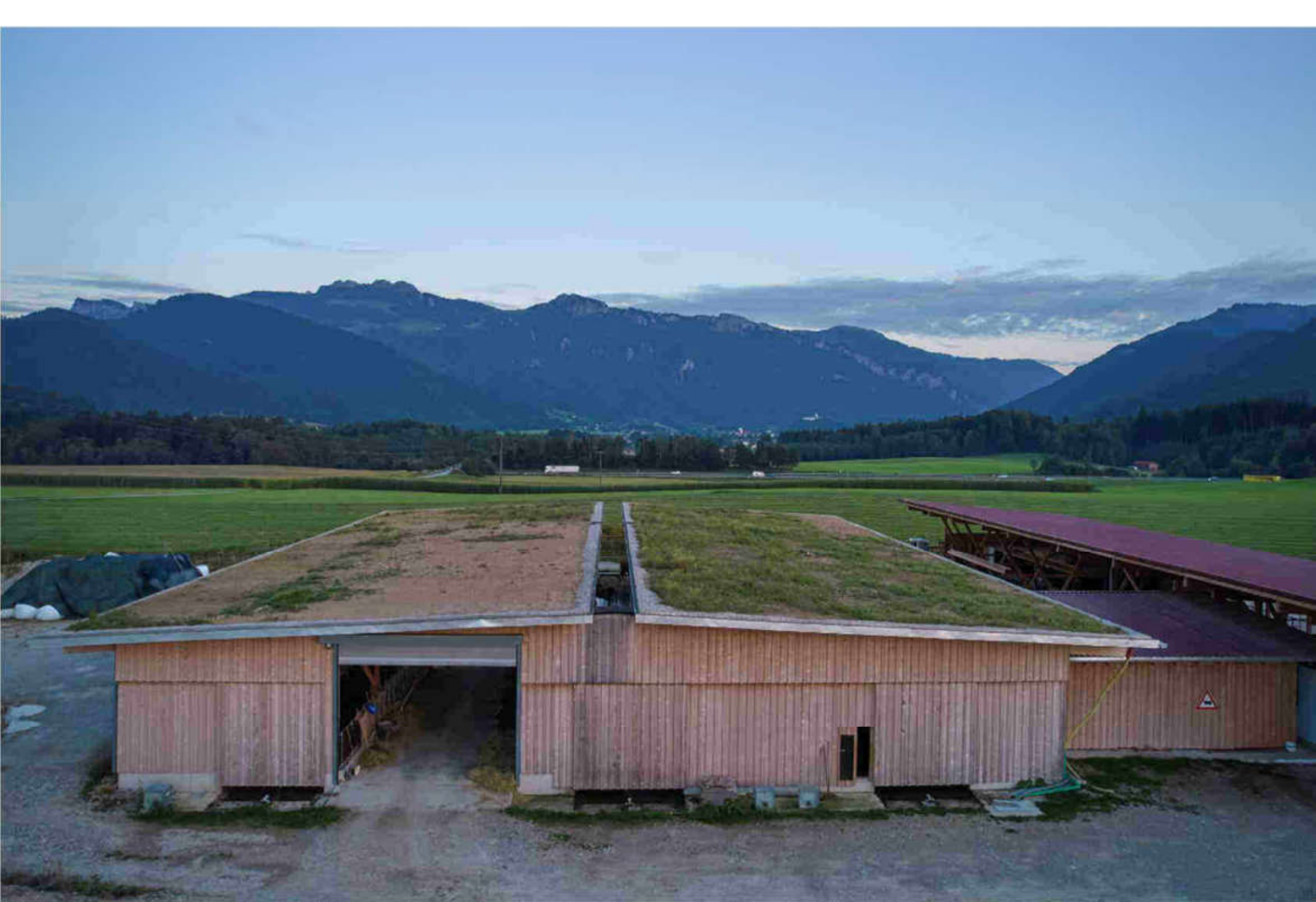


Landwirtschaft und Forsten Traunstein





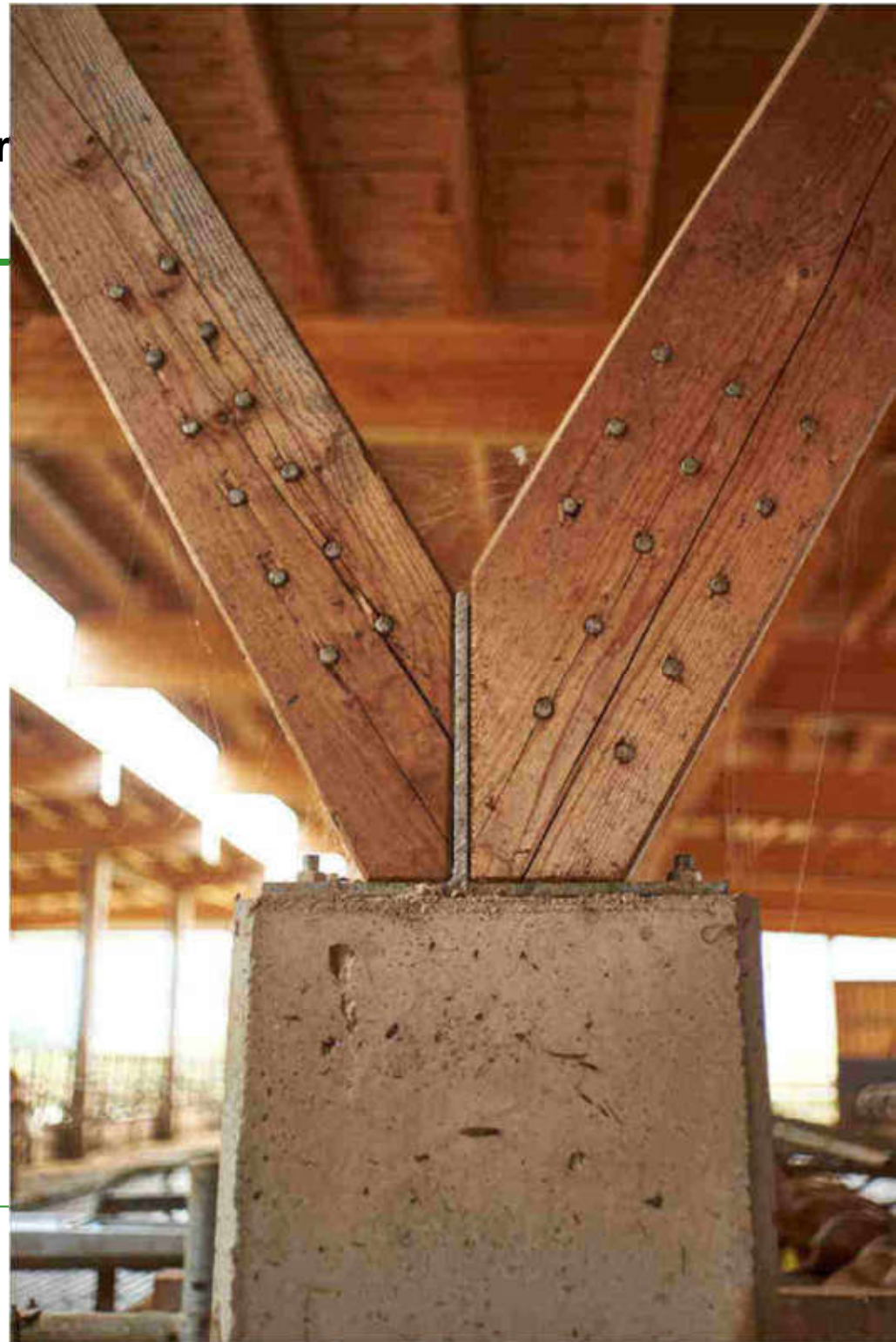




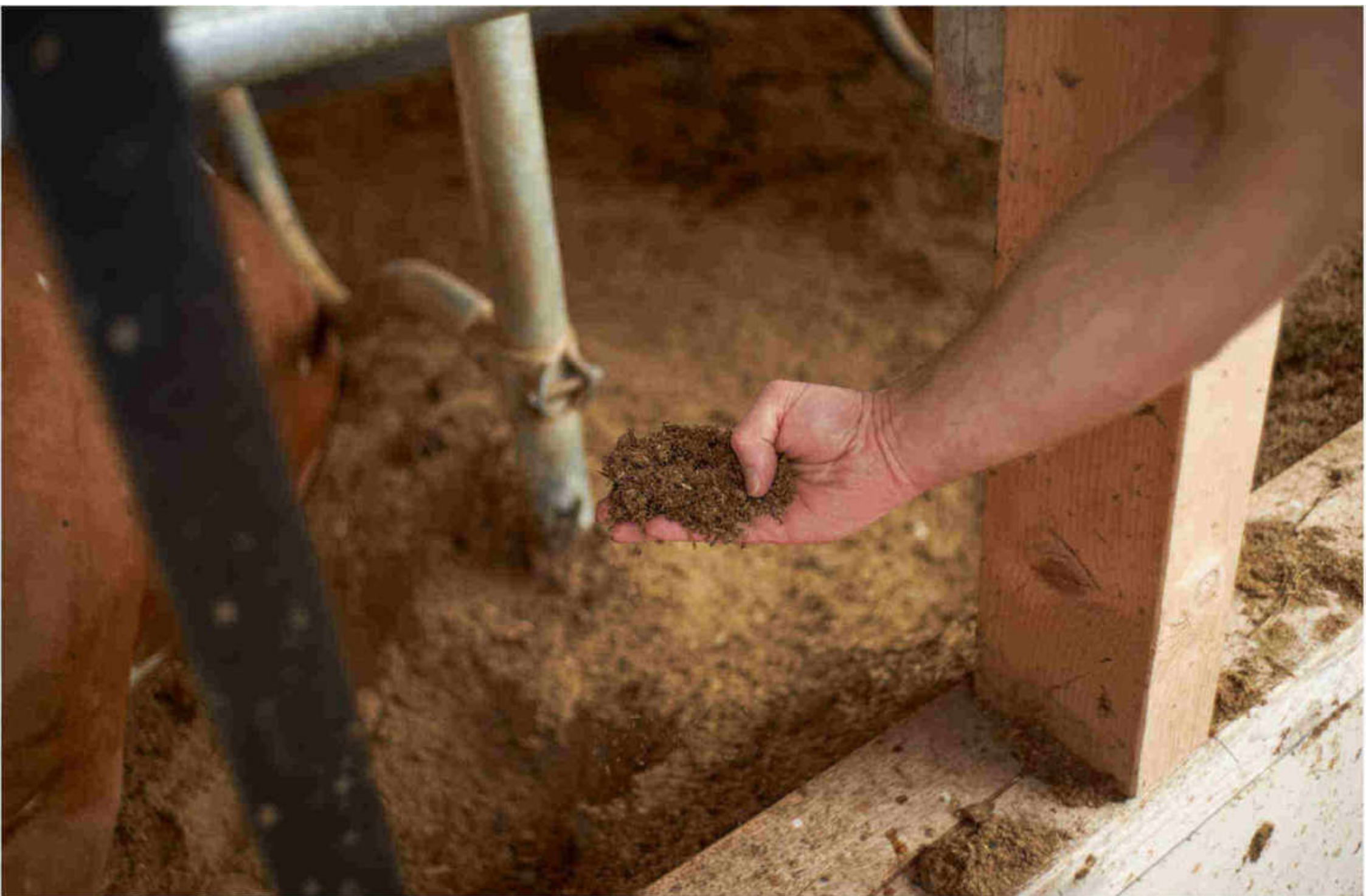




Amt für Ernähr









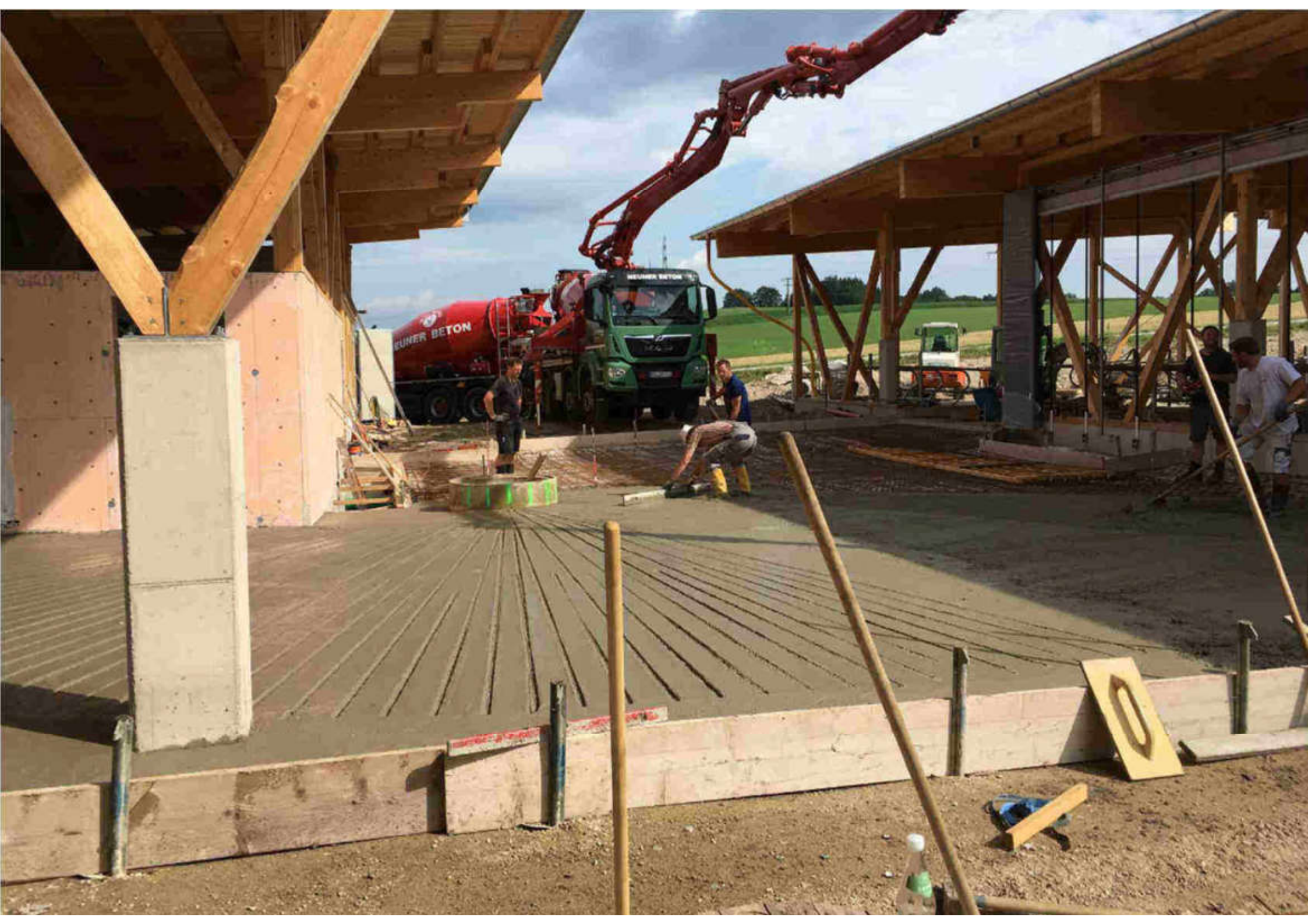










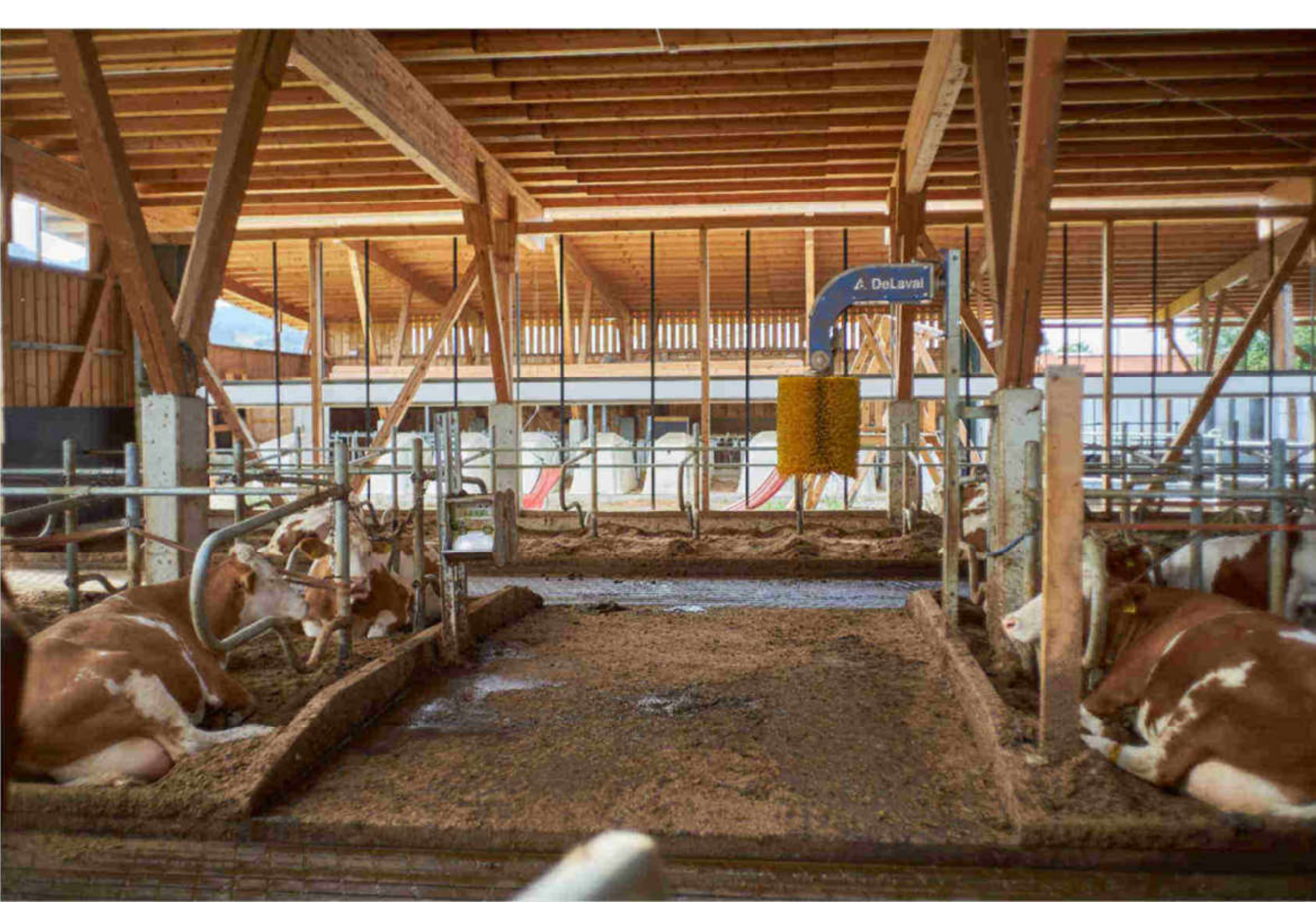


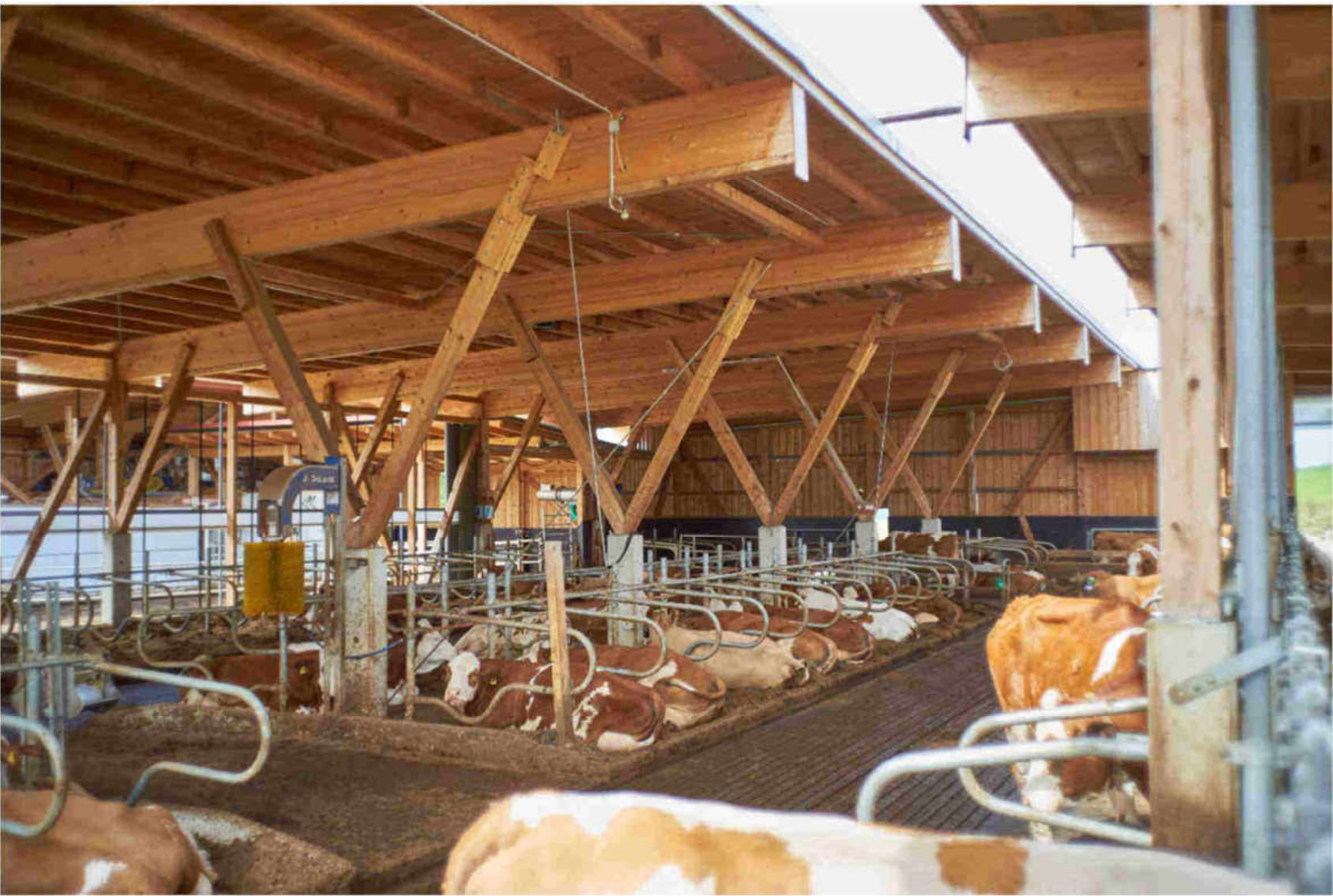














































Andreas Pichl 0172-2917984

Stefan Bauer 0162-2697392

stefan.bauer@aelf-hk.bayern.de

Josef Stadler 0175-5949223